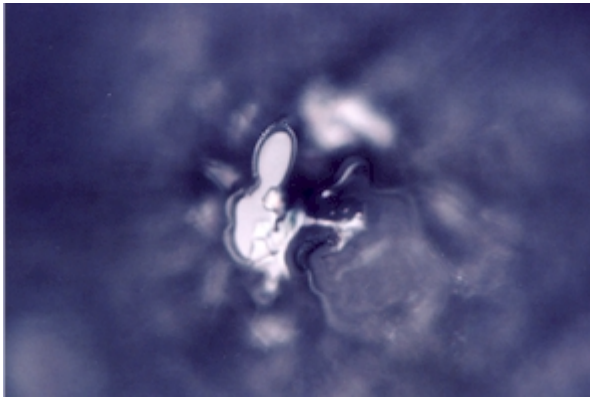


## **Exciting research experiment with Pranic Distant Healing**

Dr Masaru Emoto, is an internationally renowned researcher on water and his laboratory , in Japan, examines frozen water crystals under a microscope and photographs them with special equipment.

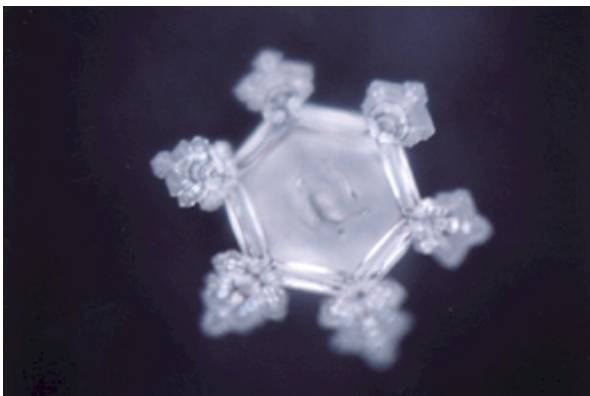
On 24th July 2003 Dr Hazel Wardha coordinated a research experiment with Dr Masaru Emoto's laboratory. 12 Pranic healers from Melbourne and a Pranic Healer from the Philippines projected Pranic energy to a Tokyo tap water sample placed in Dr Emoto's laboratory in Japan.

The treated water sample and the control water sample were frozen and their crystals were examined under a microscope and photographed with a special camera. The beautiful crystal formation in the water sample , treated with Pranic healing, has yielded an exciting result, which validates the power of Pranic healing , to alter states of matter, even from a distance.



**Picture 1 :** Control water sample of Tokyo tap water. This sample did not receive Pranic energy

[\[Click here to obtain high resolution picture\]](#)



**Picture 2.** Water sample of Tokyo tap water after being treated with Pranic healing.

[\[Click here to obtain high resolution picture\]](#)